

# MEMPHIS DISTRICT FY23 PROCUREMENT OPPORTUNITIES



US Army Corps  
of Engineers®

COL Brian D. Sawser  
Commander  
Memphis District

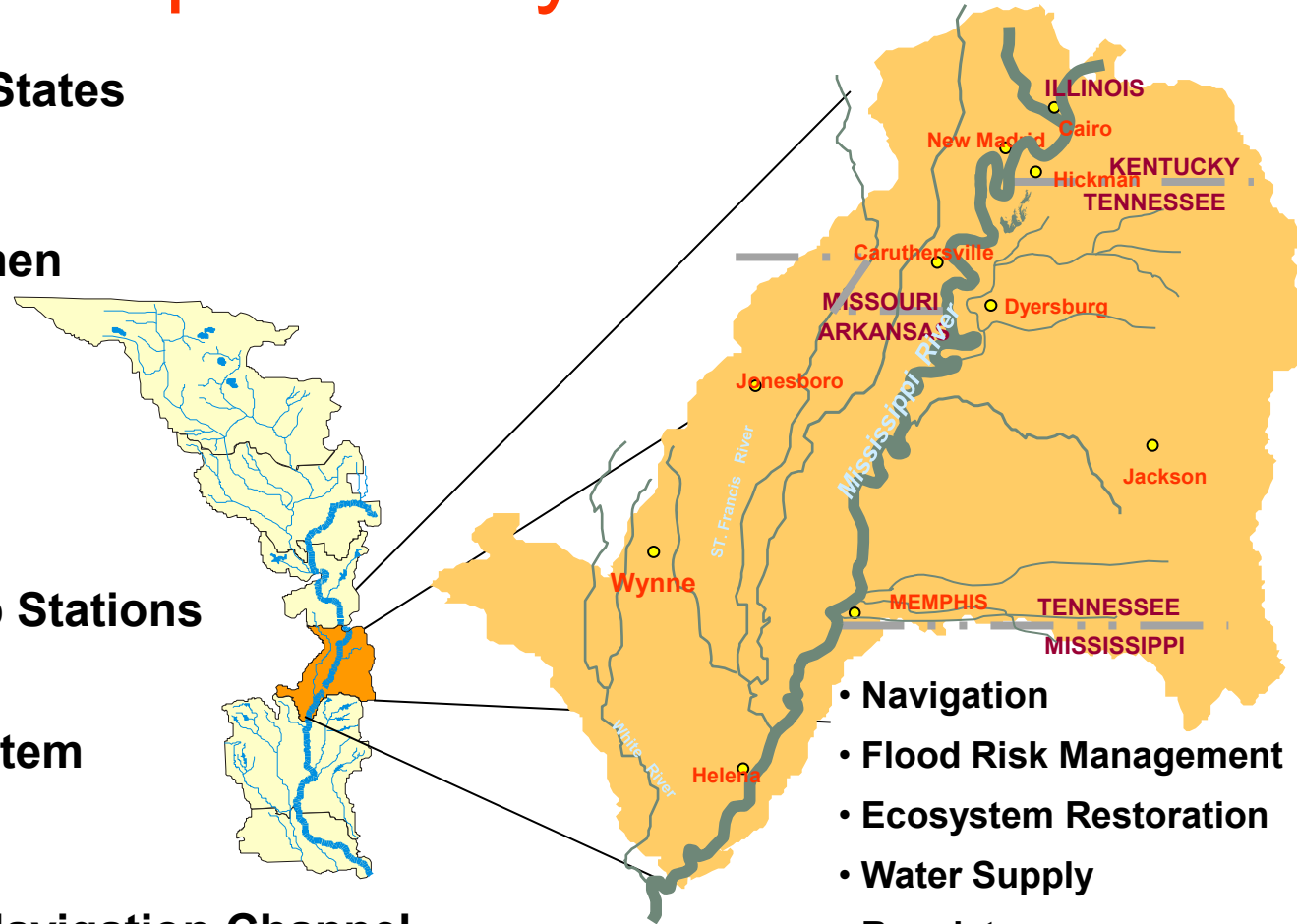


# Area of Responsibility

- Portions of 6 States
- 12 Senators
- 10 Congressmen

- 400 Dikes
- 10 Harbors
- 3 Major Pump Stations
- St. Francis Channel System

- 600 Miles of Navigation Channel
- 1,000+ Miles of Federal Levees
- 38 Levee/Drainage Districts



- Navigation
- Flood Risk Management
- Ecosystem Restoration
- Water Supply
- Regulatory
- Emergency Operations



# MISSISSIPPI RIVER CHANNEL IMPROVEMENT – RIVER WORK



PROJECTS	Advertisement	Type of Work	Acquisition Strategy	Contract Amount Range
CHI-DC Walnut Bend/Shoofly Bar	15 Nov 22	Stone Work	MATOC Task Order Competition	\$5M-\$10M
CHI-RM LaForge, MO Revetment Repairs -- 2020 flood	17 Mar 23	Stone Work	SATOC Task Order	\$1M-\$5M
CHI-DC Below Williams Dikes, KY	14 Apr 23	Stone Work	MATOC Task Order Competition	\$1M-\$5M
CHI-DC Stewarts Towhead, MO	12 May 23	Stone Work	MATOC Task Order Competition	\$1M-\$5M
CHI-DM FY23 Dike Stone Repairs	26 May 23	Stone Work	SATOC Task Order	\$1M-\$5M
CHI-DC Cedar Point Dikes, TN	31 May 23	Stone Work	MATOC Task Order Competition	\$5M-\$10M
CHI-DM Dike Stone Repairs - 2020 Flood	16 Jun 23	Stone Work	SATOC Task Order	\$1M-\$5M
CHI-RM Revetment Stone Repairs - 2020 Flood	14 Jul 23	Stone Work	SATOC Task Order	\$1M-\$5M
CHI-RM Stone Repairs - 2020 Flood	14 Jul 23	Stone Work	SATOC Task Order	\$1M-\$5M



# LEVEES & CHANNELS



PROJECTS	Advertisement	Type of Work	Acquisition Strategy	Contract Amount Range
MRL-C LT Fish Market Gate/Hwy 51, IL	02 Dec 22	Levee earth work - Berm/Relief Wells	RFP	\$1M-\$5M
MRL-C LT St. Thomas, AR Berm Re-Eval	09 Dec 22	Levee earth work - Berm/Relief Wells	FY23 MVM Seepage MATOC - Targeted Seed Task Order for MATOC	\$5M-\$10M
MRL-M Farrenburg Levee Renovations – Phase 7	16 Dec 22	Levee earth work	RFP	\$1M-\$5M
MRL-C LT West Memphis, AR Re-Eval	20 Jan 23	Levee earth work - Berm/Relief Wells	IFB/RFP	\$1M-\$5M
Bayou Meto Canal 1000 Phase 3.2	01 May 23	Channel Construction	RFP / trade offs	\$500k-\$1M
MRL-M St. John's Bayou Outlet Ditch	05 May 23	Channel Cleanout / repair (rock)	IFB	\$1M-\$5M
SFB-M DD17 Inlet Channel Cleanout	08 Aug 23	Channel Cleanout	Sole Source	\$1M-\$5M



# FLOODWALLS & CULVERT REPLACEMENT



PROJECTS	Advertisement	Type of Work	Acquisition Strategy	Contract Amount Range
SFB-M Big Slough Levee Culvert	22 Apr 23	Culvert	RFP	\$1M-\$5M
MRL-C LT Helena, AR Floodwall	19 Jul 23	Floodwall	RFP	>\$10M



# MISC. REPAIRS



PROJECTS	Advertisement	Type of Work	Acquisition Strategy	Contract Amount Range
MRL-M MRL Levee Resurfacing_FY21 (1 of 1)	03 Feb 23	Gravel Resurfacing	IFB/RFP	\$1M-\$5M
WRB-M Graham Burke Gearbox Rebuild	17 Mar 23	Service Contract - New Engines	Service Supply Contract	\$1M-\$5M
SFB-M W.G. Huxtable Pumping Plant Engine Rebuild	31 Mar 23	Service Contract - New Engines	Sole Source	>\$10M
SFB-M W.G. Huxtable Gear Box Rebuild	31 Mar 23	Service Contract - New Engines	Service Supply Contract	\$1M-\$5M
MRL-M System 3, KY / TN Gravity Flow Structures Renovation	14 Apr 23	Structures	IFB	\$1M-\$5M
WRB-M Graham Burke Trash Rack	22 May 23	Trash Rack Repair	Service Supply Contract	\$1M-\$5M
MRL-M Drinkwater II Pumping Plant Facility Upgrades	06 Jul 23	Pump Station	RFP	\$1M-\$5M
MRL-M Drinkwater II Pump Station, MO	06 Jul 23	Pump Station	RFP	\$1M-\$5M
MRL-M System 1, IL Gravity Flow Structures Renovation	25 Aug 23	Structures	RFP	\$1M-\$5M



# MATOC / SATOC BASE CONTRACTS



<b>PROJECTS</b>	<b>Advertisement</b>	<b>Type of Work</b>	<b>Acquisition Strategy</b>	<b>Contract Amount Range</b>
MS RIVER STONE MATOC	NOV 22	BASE CONTRACT	MATOC	\$150M
STRUCTURES MATOC	25 AUG 23	BASE CONTRACT	MATOC	\$25M
MISC REPAIRS MATOC	JAN 23	BASE CONTRACT	MATOC	\$45M
SEEPAGE MATOC	09 DEC 22	BASE CONTRACT	MATOC	\$40M
RELIEF WELL SATOC	09 DEC 22	BASE CONTRACT	SATOC	\$10M



# MEMPHIS DISTRICT - POINTS OF CONTACT



**Memphis District Commander**  
Colonel Brian D. Sawser

**Planning, Programs & Project  
Management Division**  
Donny Davidson  
(901) 544-3227

**Architect-Engineer Coordinator**  
Matthew Taylor  
(901) 544-0722

**Engineering & Construction  
Division**  
Elizabeth Burks  
(901) 544-0761

**Operations Division**  
Andrea Williams  
(901) 299-1414

**Small Business Programs**  
Christine Davis  
(651) 290-5723

**Construction Branch**  
James (Jim) Wolff  
(901) 544-3113

**Regulatory Branch**  
Gregg Williams  
(901) 544-3471

**Contracting Division**  
Priscilla G. Sweeney  
(901) 544-3117

**[On the Web](#)**

[www.mvm.usace.army.mil](http://www.mvm.usace.army.mil)

**[On Social Media](#)**

